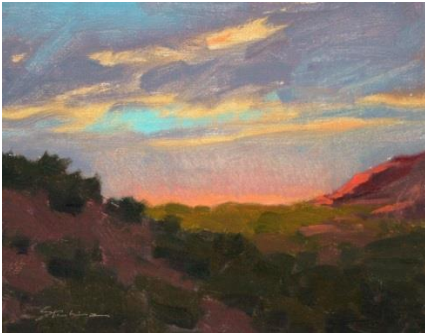


## Views from Outside the Box

Aug. 7-Dec. 2

Artists Matt Sterbenz and William Lesch create work inspired by nature. Sterbenz's artwork is influenced by the relationship between the texture of paint and the texture of subject matter, as well as an interest in portraying the changes of light and color found in nature. Lesch on the other hand, is a photographer interested in the capabilities of digital photography. Sterbenz and Lesch share a love of the outdoors and spend a tremendous amount of time studying the Arizona landscape outside of the studio, allowing the surroundings to influence their creations.



*Evening Glow*, by Matt Sterbenz

### **Matt Sterbenz, Chandler**

Born in Phoenix, Sterbenz began painting at an early age, inspired by the desert landscape of his home. After graduating from Arizona State University in 2011, he has been creating a body of work painted almost entirely outdoors. He is drawn to the colors and light qualities of the landscapes and hopes to create art that inspires viewers with a new appreciation of nature.

*"The paintings included in this exhibition were created entirely outdoors in Papago Park, a very familiar sight to residents of the Valley. When I paint outdoors it involves watching the color and light change right before my eyes. Because the light changes so quickly, a painting must be approached in a similar fashion. The result is a painting created in less than two hours, with a "freshness" that is not often found in studio-created work."*

[www.msterbenz.com](http://www.msterbenz.com)



*Palo Verde and Stars*, by William Lesch

### **William Lesch, Tucson**

Lesch has been a photographer for more than 30 years. He earned his Bachelor of Fine Arts in photography from the University of Arizona in Tucson, AZ in 1976. He has shown in exhibitions around the world and his work is included in a number of collections. Lesch lives and works in an adobe house and darkroom that he built himself by hand, and is represented by Etherton Gallery in Tucson and Larsen Gallery in Scottsdale and owns his own photography studio in Tucson.

*"Working with digital cameras has allowed me to expand my series into hundreds of exposures taken over hours or even days, all shot from a tripod in the same location. My interest is in the eternal present, the ebb and flow of time upon the earth. I combine the exposures later using Photoshop in the darkroom, overlaying all these multiple instants to create a timeless landscape of change. The still life photographs of saguaro skeletons are another way of getting at this sense of change, the gradual decomposition of the desert plants. As they disintegrate they become like potsherds, burnished by the sun and heat, skeletal remains of the once living desert."*

[www.williamlesch.com](http://www.williamlesch.com)



Tempe Galleries

A satellite program with the Gallery at Tempe Center for the Arts

700 W. Rio Salado Parkway, Tempe, AZ 85281

480-350-2867