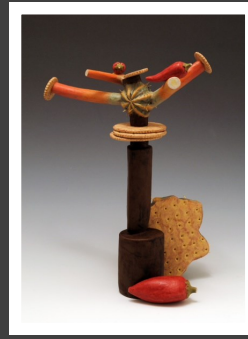




Tread #3, by Sandy Blain



Diatom, by Danielle Wood



Tree of Life: Hot and Dry,
by Sandra Luehrsen



Fried Fish,
by Halldor Hjalmarson

ASU ART MUSEUM CERAMICS RESEARCH CENTER ARTISTS ADVISORY COMMITTEE

Dec 11, 2015 - April 13, 2016

The Arizona State University Art Museum Ceramics Research Center (CRC) Artists Advisory Committee (AAC) was assembled with the opening of the CRC in 2002. This exhibition features artwork by selected members of the AAC.

Participating artists:

Tiffany Bailey

Magda Gulszek

Susan Risi

Sandy Blain

Halldor Hjalmarson

Patricia Sannit

Stephen Bunyard

Deborah Hodder

Katheryn Sins

Esmeralda Delaney

Sandra Luehrsen

Danielle Wood

James Gamble

Constance McBride

Each year, the AAC organizes a Self-Guided Ceramic Studio Tour, allowing the public to tour the studios of professional artists and graduate students for free. This year the tour will take place on February 20 & 21, 2016 with 50 Arizona artists participating at 14 sites. Artists will display and sell their ceramic art, as well as demonstrate a clay forming or surface technique.

More information about the tour can be found at: <http://asuartmuseum.asu.edu/studiotour>